

**Key:**

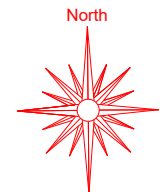
- Footway Construction (bituminous surfacing)
- Green Coloured Surfacing
- Tactile Paving
- Traffic Signs

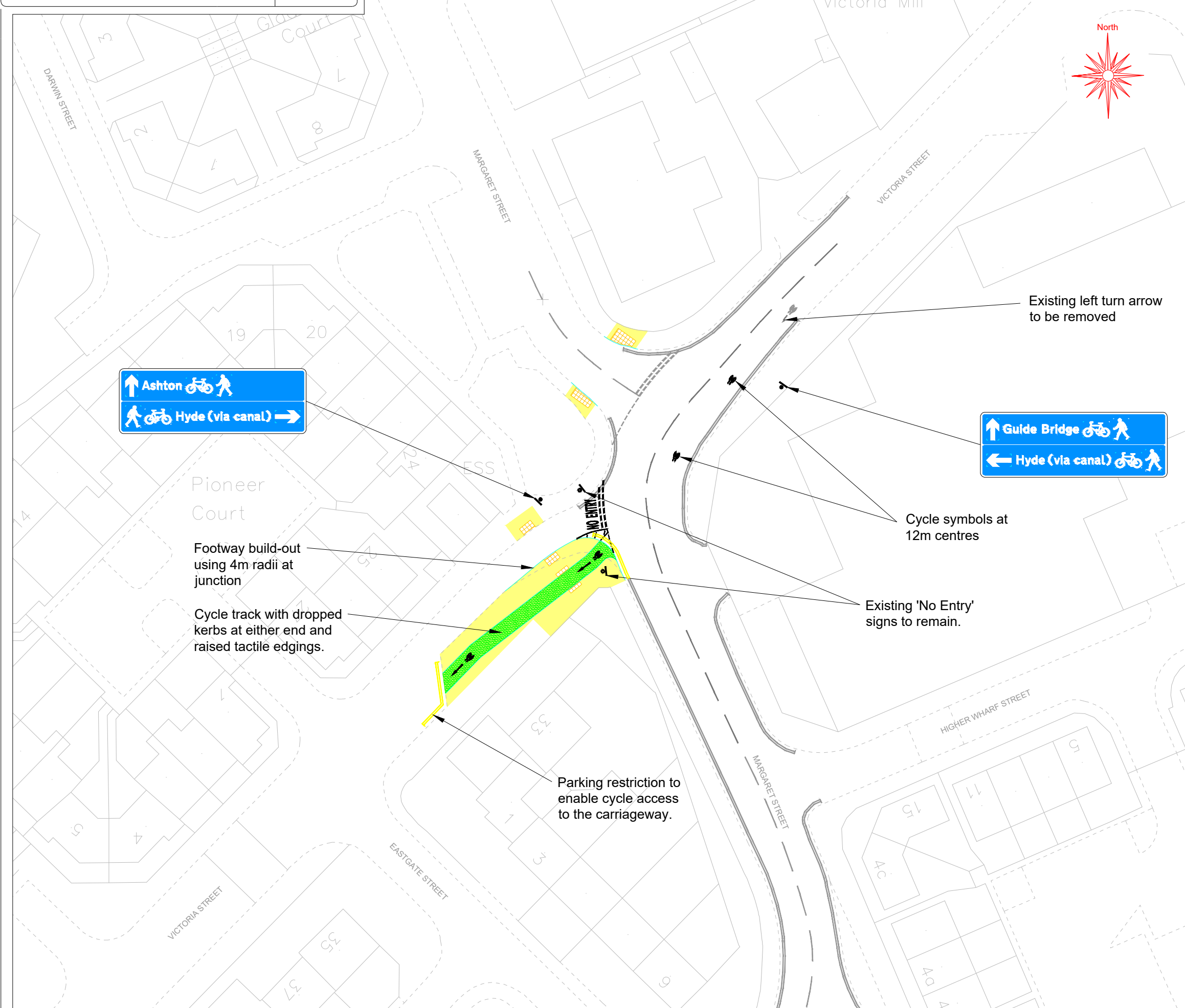
P02	11.08.2020	For Business Case Approval	JS
P01	05.02.2020	First Issue	JS
Ref.	Date	Details	Initials
Revisions			

**OPERATIONS & NEIGHBOURHOODS**  
 Assistant Director: Emma Varnam  
 Head of Environmental Services (Design & Delivery): Lee Holland  
 Tame Street Depot, Tame Street, Stalybridge, SK15 1ST.  
[www.tameside.gov.uk](http://www.tameside.gov.uk)  
 Tel: 0161 342 8355 Fax: 0161 342 3964  
 email: [eng.designunit@tameside.gov.uk](mailto:eng.designunit@tameside.gov.uk) Twitter: @tmbc\_highways

Title  
**The Mayor's Cycling and Walking Challenge Fund**  
 Hill Street, Ashton  
 Hill Street Contraflow  
 Detailed Design for Approval

Scale	Drawn JS	Checked AW	Scheme ID HS6051-006
1:500 @ A3	Date 11/08/2020	Date 11/08/2020	Drawing Status For Information





**Key:**

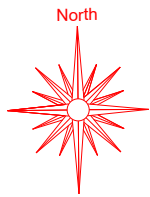
- Footway Construction (bituminous surfacing)
- Green Coloured Surfacing
- Tactile Paving
- Traffic Signs

P02	11.08.2020	Issued for Business Case Approval	JS
P01	50.02.2020	First Issue	JS
Ref.	Date	Details	Initials
Revisions			

**OPERATIONS & NEIGHBOURHOODS**  
 Assistant Director: Emma Varnam  
 Head of Environmental Services (Design & Delivery): Lee Holland  
 Tame Street Depot, Tame Street, Stalybridge, SK15 1ST.  
 www.tameside.gov.uk  
 Tel: 0161 342 8355 Fax: 0161 342 3964  
 email: eng.designunit@tameside.gov.uk Twitter: @tmhc\_highways

Title  
 The Mayor's Cycling and Walking Challenge Fund  
 Hill Street, Ashton  
 Victoria Street / Margaret Street Junction  
 Detailed Design for Approval

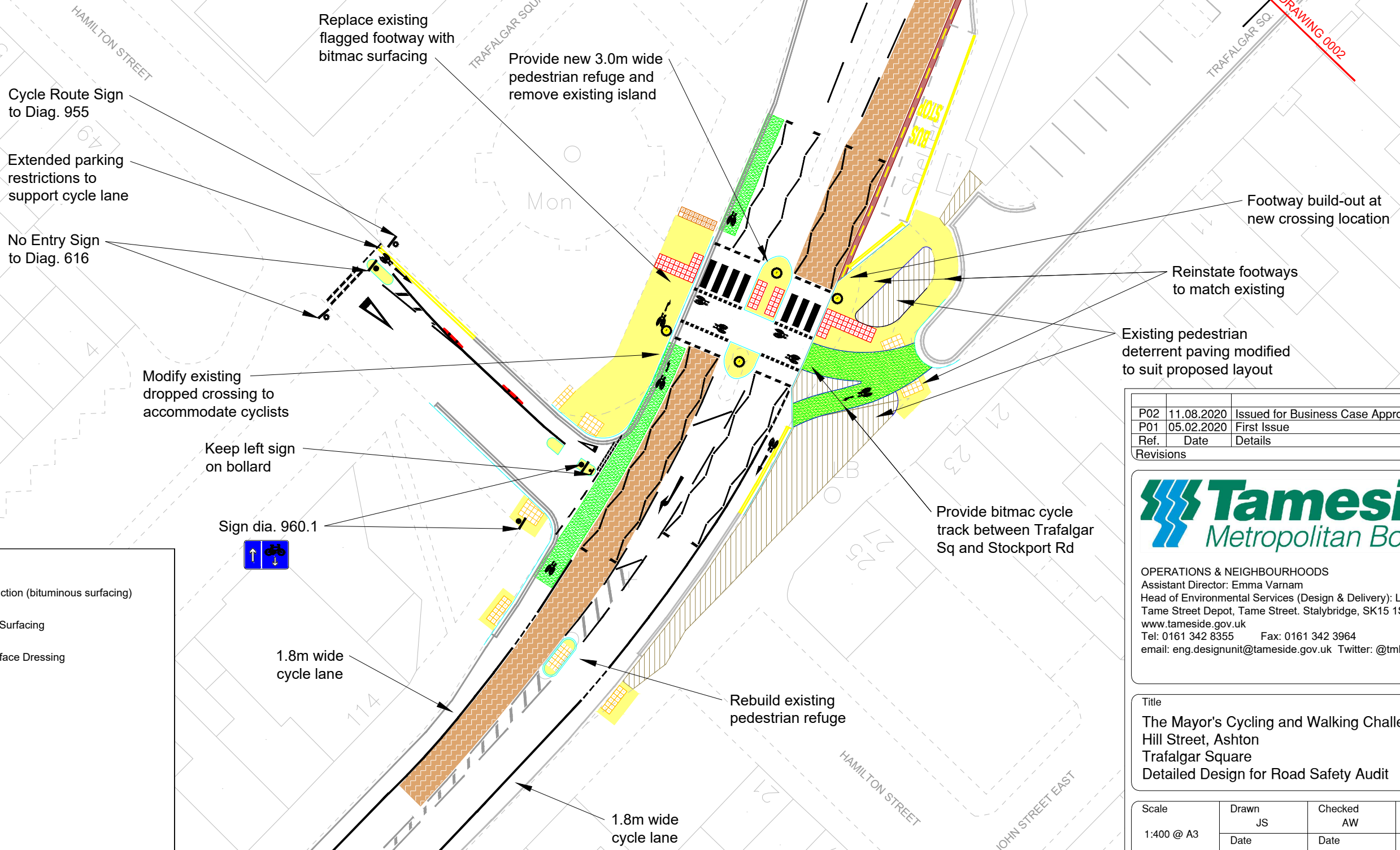
Scale	Drawn JS	Checked AW	Scheme ID HS6051-006
1:500 @ A3	Date 11/08/2020	Date 11/08/2020	Drawing Status For Information



West End  
Meth Ch

TCB

CUTLINE REFER TO DRAWING 0002



**Key:**

- Footway Construction (bituminous surfacing)
- Green Coloured Surfacing
- High Friction Surface Dressing
- Tactile Paving
- Traffic Signs

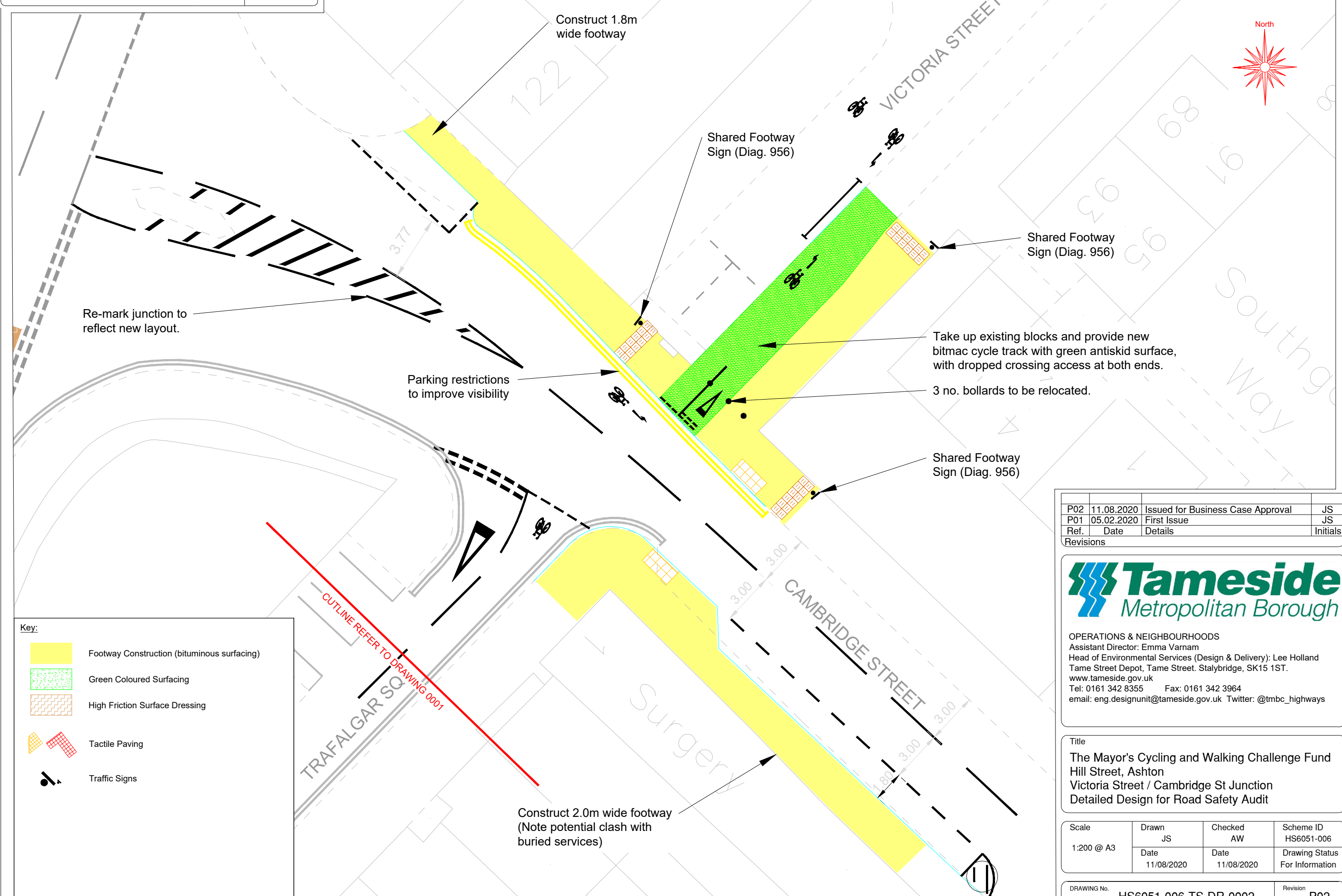
P02	11.08.2020	Issued for Business Case Approval	JS
P01	05.02.2020	First Issue	JS
Ref.	Date	Details	Initials
Revisions			



**OPERATIONS & NEIGHBOURHOODS**  
 Assistant Director: Emma Varnam  
 Head of Environmental Services (Design & Delivery): Lee Holland  
 Tame Street Depot, Tame Street, Stalybridge, SK15 1ST.  
 www.tameside.gov.uk  
 Tel: 0161 342 8355 Fax: 0161 342 3964  
 email: eng.designunit@tameside.gov.uk Twitter: @tmbc\_highways

Title  
**The Mayor's Cycling and Walking Challenge Fund**  
 Hill Street, Ashton  
 Trafalgar Square  
 Detailed Design for Road Safety Audit

Scale	Drawn	Checked	Scheme ID
1:400 @ A3	JS	AW	HS6051-006
	Date	Date	Drawing Status
	11/08/2020	11/08/2020	For Information



**Key:**

- Footway Construction (bituminous surfacing)
- Green Coloured Surfacing
- High Friction Surface Dressing
- Tactile Paving
- Traffic Signs

P02	11.08.2020	Issued for Business Case Approval	JS
P01	05.02.2020	First Issue	JS
Ref.	Date	Details	Initials
Revisions			

**OPERATIONS & NEIGHBOURHOODS**  
 Assistant Director: Emma Varnam  
 Head of Environmental Services (Design & Delivery): Lee Holland  
 Tame Street Depot, Tame Street, Stalybridge, SK15 1ST.  
 www.tameside.gov.uk  
 Tel: 0161 342 8355 Fax: 0161 342 3964  
 email: eng.designunit@tameside.gov.uk Twitter: @tmhc\_highways

Title  
 The Mayor's Cycling and Walking Challenge Fund  
 Hill Street, Ashton  
 Victoria Street / Cambridge St Junction  
 Detailed Design for Road Safety Audit

Scale	Drawn JS	Checked AW	Scheme ID HS6051-006
1:200 @ A3	Date 11/08/2020	Date 11/08/2020	Drawing Status For Information